

**EMANUEL COUNTY EARLY HEAD START**  
2015-2016 Annual Program Report

The federally funded grant program, awarded to the Emanuel County Board of Education, provides comprehensive year-round center-based services to 48 infants and toddlers up to age three and 7 pregnant women. Six mixed-age classrooms comprised of eight infants and toddlers are supervised by two trained caregivers. Full-day services are provided 220 days per year, eight hours daily, from 7:30 a.m. to 3:30 p.m., at the new Early Learning Center adjoining Swainsboro Primary School utilizing the Creative Curriculum, Ages and Stages, Ages and Stages: Social-Emotional, and The OUNCE Scale assessment instrument.

Service Area--Emanuel County—Swainsboro, Twin City, Adrian, Oak Park, Summertown, Garfield, Lexsy, and Stillmore.

Services to Pregnant Women—Pregnant teens at local high schools and middle schools are target groups.

**Financial Award for 2015-2016 Program Year- \$ 696,936 Federal Dollars and No Private Funds-- \$17,200 Training and Technical Assistance Funds Included--\$178,534 Required Non-Federal Match Funding Period-- September 1<sup>st</sup> to August 31<sup>st</sup>**

**Proposed 202015-2016 Budget--\$714,136--Budgetary Expenditures--\$696,936 (Salaries, fringe benefits, supplies \$26,993, operating expenses) and \$17,200 Staff Training and Technical Assistance.**

**Family Eligibility**--Head Start Income Guidelines Weighted Application to insure children and families most in need are served (parents in school or working). Ten percent of funded enrollment slots (6) must be made available to children with disabilities each program year.

**Governance**--Emanuel County Board of Education—Fiscal Agent and Governing Body  
Policy Council—3 Community Representatives and 4 Parents—Quarterly Meetings

**Staff-**

Director—Gail McRae

Early Childhood & Disabilities Manager--Christy Ellington

Health/Nutrition/Services to Pregnant Women Coordinator—Jennifer Kelly

Parent Involvement/Family Services Coordinator—Nita Livingston

Mental Health Coordinator—Pam Carr

12 Classroom Caregivers and 3 Support Staff—Total staff—20

**Classroom Staff Credentials**

BS Degree--1

AA Degree--5

Child Development Associate Credential--6

**Community Partnerships**

Approximately thirty-five partnership agreements between Emanuel County Early Head Start and local community resource providers help insure enrolled at-risk families have access to needed resources and services to help them become more self-sufficient.

**Program Facts**

Funded Enrollment--55

Average Monthly Enrollment--55

Percentage of Eligible Children Served--100%

Infants and Toddlers Served—66

Children with Disabilities Served--11

Pregnant Women Served--15

Total Families Served—81

Volunteer Hours—4,338

Meals Served by School Nutrition Program—17,063  
(Breakfast and Lunch)

Snacks Served—8,514

Number on Wait List--64

Health Checks for Children--128

Dental Exams for Children--32

Family Engagement Activities--42

Fathers Attending Activities—14

Family Engagement Activities Attendance-1,104      Number of Children Withdrawn-5  
Newborns/Infants of Pregnant Women Enrolled-3      Three Year Old Transitioning-13  
Number of Children Exceeding 85% Attendance--33

**2015-2016 SUCCESSFUL FEDERAL MONITORINGS OF PROGRAM with No Findings in the Head Start Key Indicator- Compliant (HSKI-C) review in January and Environmental Health and Safety review in March, and No Findings in 2014 Financial Audit.**

## **Emanuel County Early Head Start School Readiness Goals**

### **Social and Emotional Goals**

Early Head Start Infants and Toddlers Will:

- 1) Develop secure relationships with a trusted adult.
- 2) Demonstrate developmentally appropriate behavior and the ability to self-regulate in a group setting.
- 3) Develop social awareness of other children and build positive relationships with their peers.

### **Language and Literacy**

Early Head Start Infants and Toddlers Will:

- 1) Demonstrate increased receptive language skills and comprehension.
- 2) Develop oral language skills in conversation and communication with others.
- 3) Begin to identify print as a means of communication.
- 4) Develop an interest in books and having adults read to them.

### **Physical Well-Being and Motor Development**

Early Head Start Infants and Toddlers Will:

- 1) Demonstrate increased control of large muscles in body movements, coordination, and balance.
- 2) Demonstrate increased control of fine motor skills in using hands and fingers and hand-eye coordination.
- 3) Identify and participate in health, nutrition, and safety practices.
- 4) Demonstrate independence in self-help skills.

### **Cognition and General Knowledge**

Early Head Start Infants and Toddlers Will:

- 1) Develop a foundation in mathematical thinking and number concepts.
- 2) Observe, explore, question, and use language to describe their environment.
- 3) Develop age-appropriate reasoning and memory skills.

### **Approaches to Learning**

Early Head Start Infants and Toddlers Will:

- 1) Develop a sense of curiosity in learning new things.
- 2) Begin to develop the ability to persist in classroom activities and task.
- 3) Begin to develop creative solutions to solve problems.

**Emanuel County Early Head Start School Readiness Data Aggregation  
3<sup>rd</sup> Data Aggregation June, July, and August 2016**

**Classroom Data**

\*5 out of 6 classrooms have child/children with IFSP and/or IEP

\*1 out of 6 classrooms have 0 children with IFSP/IEP

Analysis of classroom screening and assessment data, based on the Ounce Scale indicators for prescribed age levels present in each classroom, and attendance, revealed that all children were developing as expected, with the exception of children with an IFSP, IEP, or delay on Ages and Stages, Ages and Stages: Social-Emotional screening tool. Assessment age levels are birth to 4 months, 4-8 months, 8-12 months, 12-18 months, 18-24 months, 24-30 months, 30-36 months, and 36-42 months.

**Program-Wide Data**

\*Program- level data aggregation included 9 Infants, 14 one-year-olds, 26 two-year-olds, and 11 three-year-olds

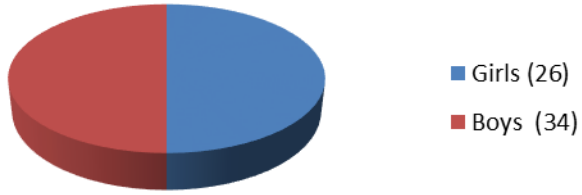
\*8 Children have IFSP and 2 child has an IEP

\*50 children are developing as expected and 10 need development. 60 children were enrolled June through August. Three girls out of 26 need development and 7 boys out of 34 need development.

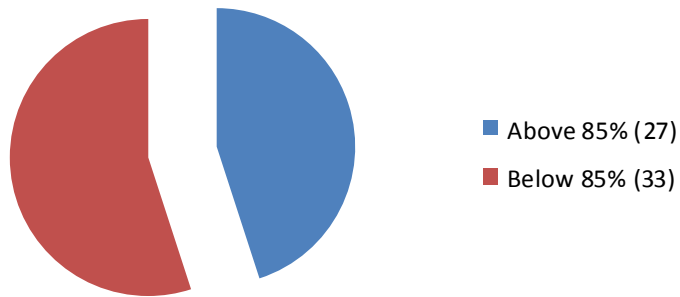
\*Program-level data aggregation reported 0 infants need development, 1 one-year-old needs development, 6 two-year-olds need development, and 3 three-year-olds need development.

Serving children in mixed-age classrooms results in enrolling infants and toddlers throughout the program year. Therefore, date of enrollment and age of child impacts the ratings on the child's School Readiness benchmarks.

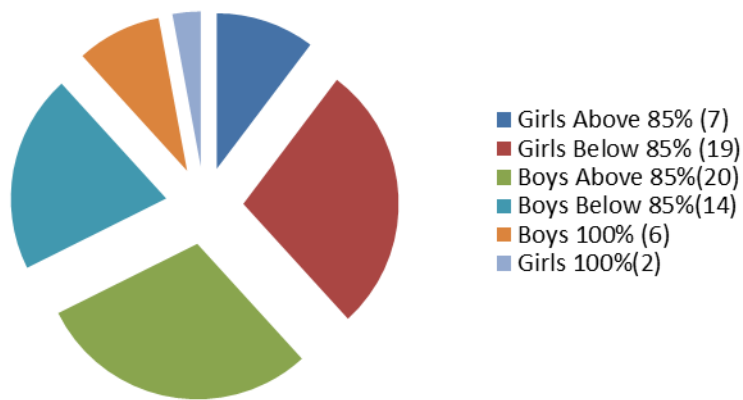
### EHS Enrollment (Male and Female)



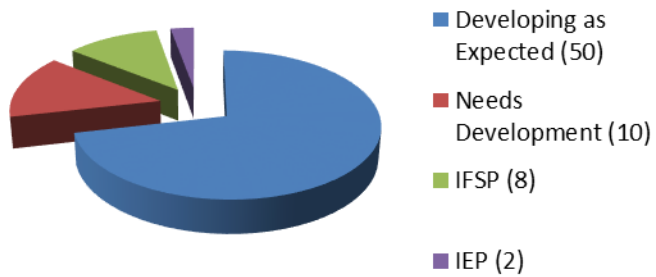
### Average Attendance All Children



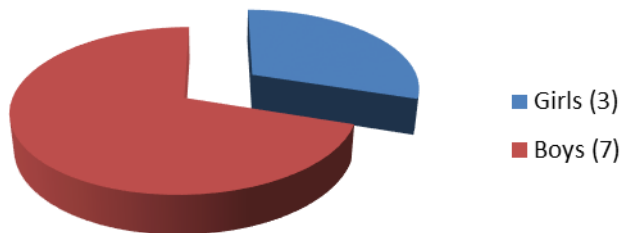
### Average Attendance Male and Female



## Assessment Data All Children



## Needs Development (Comparison by Sex)



## Needs Development (Attendance)

